

2000 UTC 26 September 2019 Forecast Discussion  
Current Ship Location: Near 24.92°N, 122.28°E

**\* THIS IS THE LAST FORMAL WEATHER FORECAST FROM CSU TEAM**

**Summary:**

Isolated deep convection directly east of Taiwan and in the vicinity of ship location. Rainy conditions are expected as the ship pulls into port and are likely to continue throughout the next 24 hrs.

A TCFA has been issued at 1430Z for Invest 91W located near 12.5°N 144.1°E as of 26 Sep 12Z. 91W now has a closed low-level circulation and is expected to intensify in the 24h forecast period and intensify to a TS beyond the 24h forecast period. JTWC says The potential for the development of a significant tropical cyclone within the next 24 hours is high. It's expected to have northwest track and recurve far east from Taiwan, but there's appreciable uncertainty in track and intensity forecast at the moment.

Invest 91W is forecast to come closest to Taiwan by Sep 30, with intensity of Cat. 2 or 3. **The weather could affect the radar destruction or flights out of Taiwan.**

FORECASTERS: COLE, JONES, and NAM



# JOINT TYPHOON WARNING CENTER

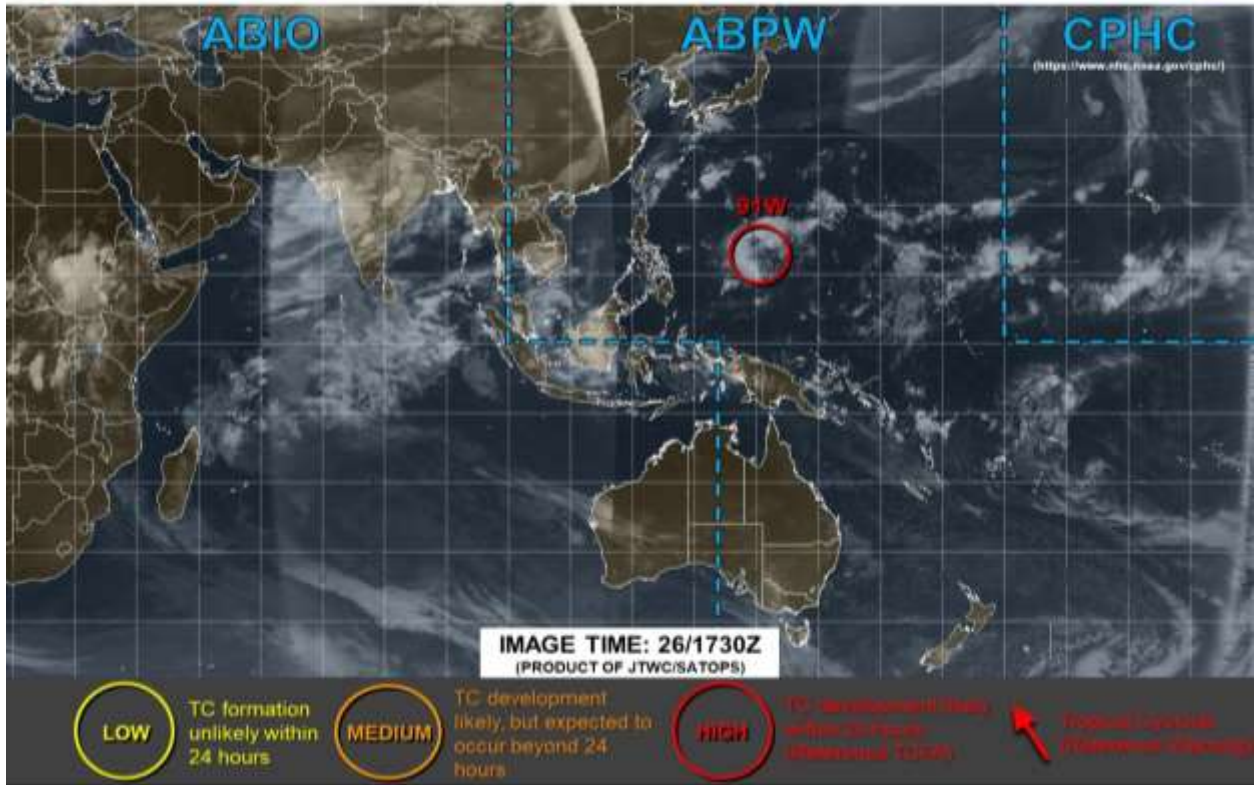
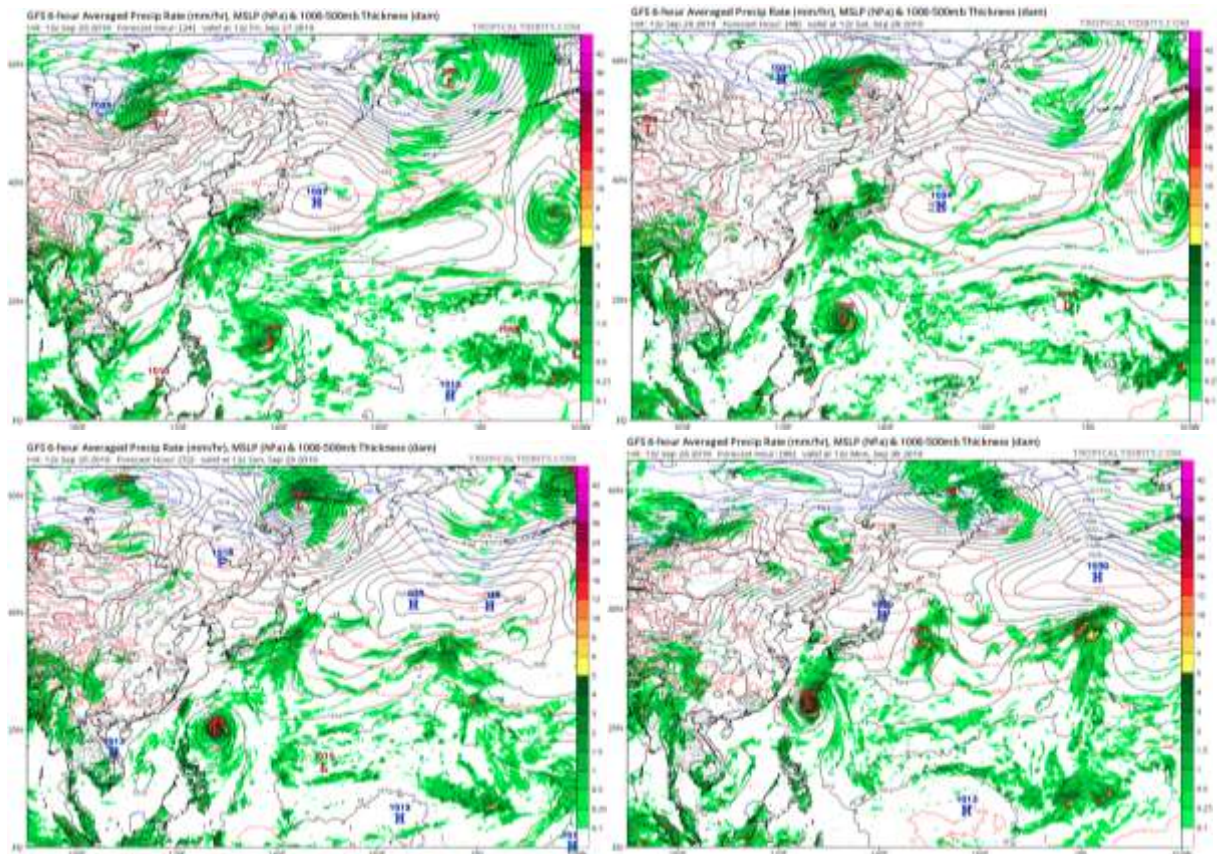
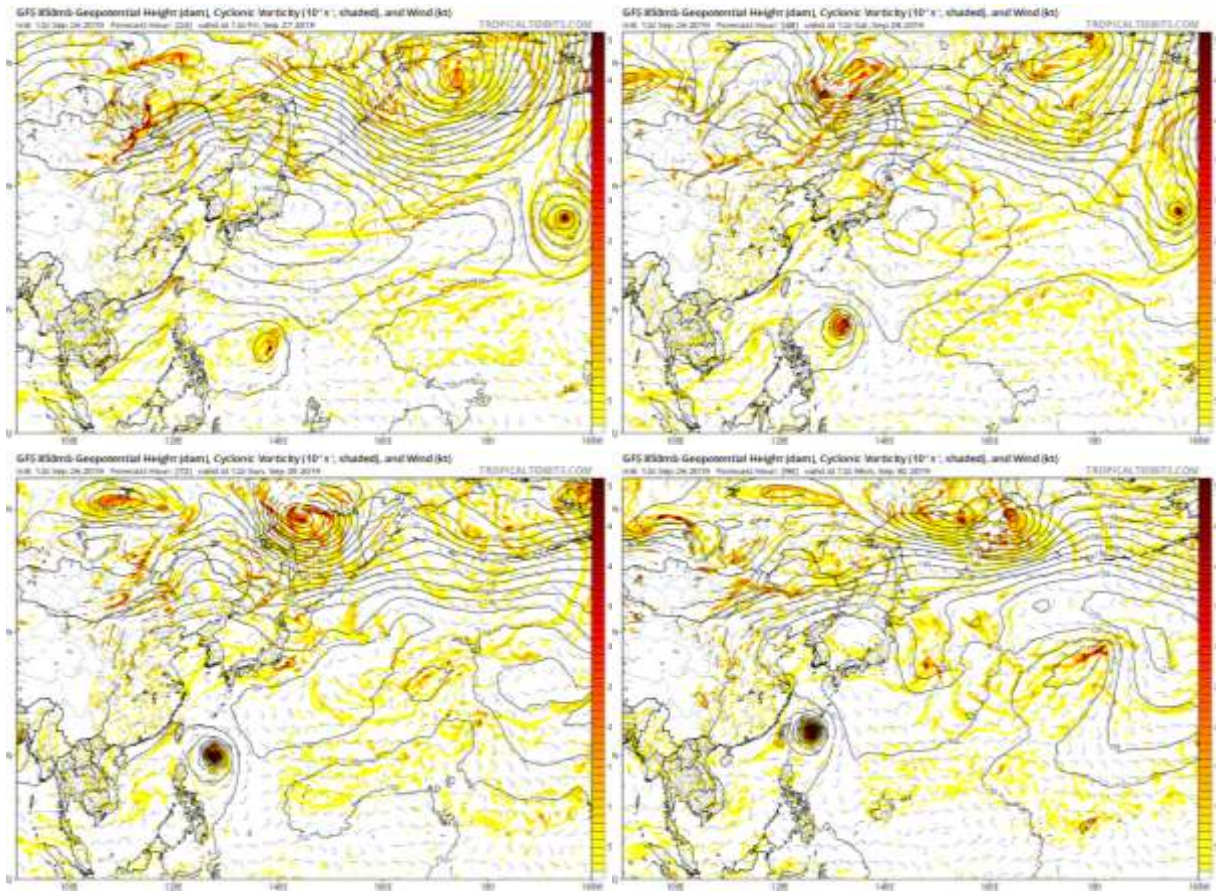


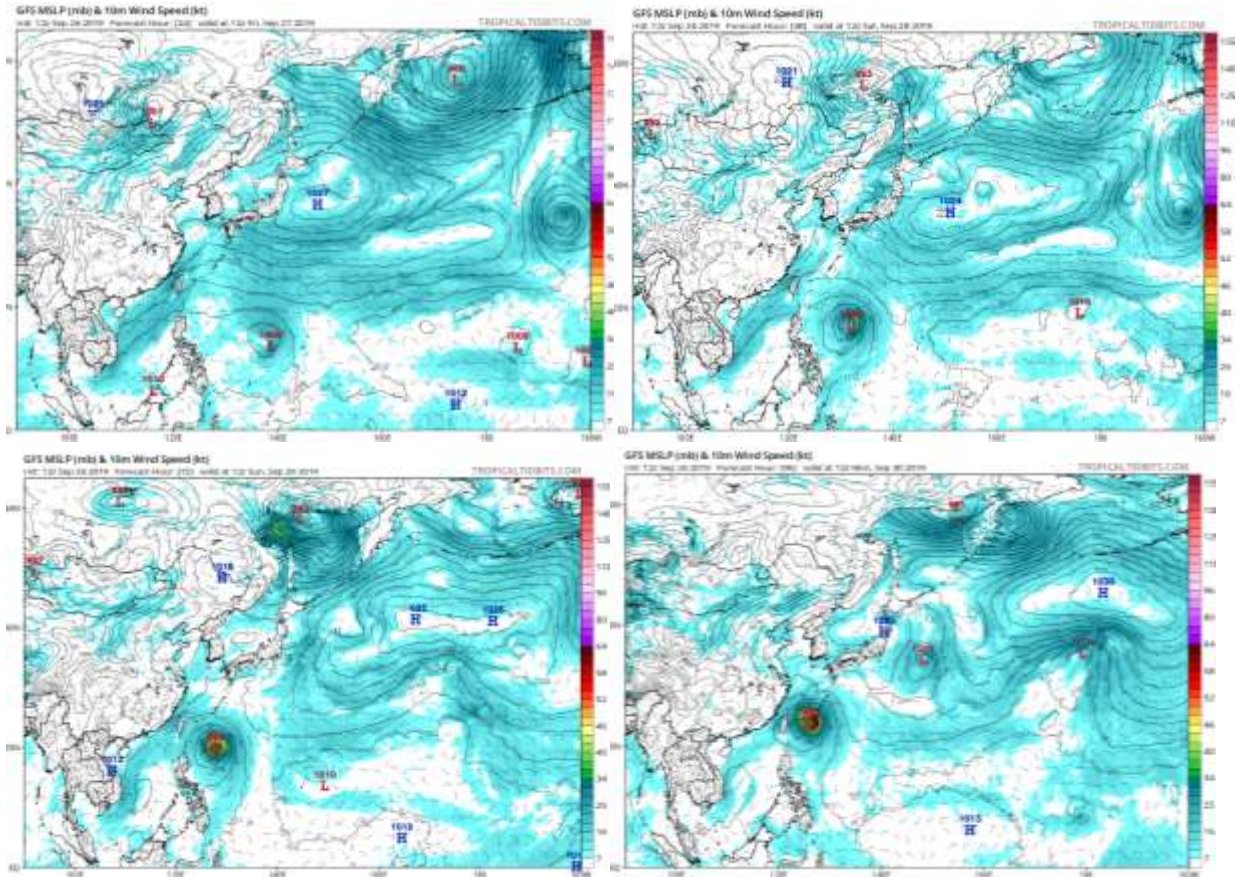
Fig. 1. JTWC TC outlook valid at 1730Z Sep 26.



**Fig. 2.** GFS 6-hr averaged precip initialized on 26Sep12Z. From top to bottom, left to right, the figures valid for 12Z Sep 27, 28, 29, and 30.



**Fig. 3.** GFS 850 mb vorticity and wind field and mean sea-level pressure initialized on 26Sep12Z. From top to bottom, left to right, the figures valid for 12Z Sep 27, 28, 29, and 30.



**Fig. 4.** GFS mean sea level pressure and 10-m winds initialized on 26Sep12Z, valid for 27Sep12Z, 28Sep12Z, 29Sep12Z, and 30Sep12Z, from top to bottom, left to right.