

2000 UTC 12 September 2019 Forecast Discussion  
Current Ship Location: Near 18.1°N, 126.1°E

**Summary:** The broad monsoon depression is expected to continue its slow northeastward motion over the next 48hrs. 95W is currently centered around 21.0°N and 133.0°E. Genesis of 95W is likely in the next 24hrs according to JTWC, but their projected motion is towards the NE and away from the area of operation. Past +72hrs, 95W may begin moving towards the SW towards the area of operation. For this reason, 95W must continue to be tracked. Thus, chances for convection are precipitation is expected to decrease. Slight decrease in northerly wind speed before the winds shift westerly. Wave heights expected to slowly decrease, remaining below 10 ft. BSISO is currently in phase 5 and is expected to propagate back to a phase 6 and onward in the 0-4 day timeframe.

**Day One (24 hr) Outlook:** Tropical cyclogenesis of 95W is likely in the next 24hrs per JTWC. There are chances for scattered convection. Winds of 10-15 kts in the operation area are expected to be predominantly westward. Significant wave heights will likely be 5-7 ft.

**Day Two (48 hr) Outlook:** Tropical cyclogenesis of 95W is likely but away from the area of operation. Chances of scattered convection are expected to increase. Winds of 5-10 kts in the operation area are expected with a chance to reach 15kts. Wave heights should decrease to 3-5 ft through Day 2.

**Extended Outlook:** Impacts to the area of operation should continue to lessen as 95W tracks more northward over the next 48hrs. Past +48hrs 95W should briefly stall and begin to track to the SW. This may bring impacts to the area of operation later on depending on its final track so 95W will continue to be tracked for this reason.

## Discussion

**TCs:** Invests 98W and 97W have now been identified by JTWC, but due to their distance from the area of operation, they will not be discussed in this forecast.

95W, currently centered around 21.0°N and 133.0°E, now has a high chance of tropical cyclogenesis in the next 24 hours according to JTWC. The GFS and ECMWF agree on a general track to the NE over the next 48 hours which should lessen impacts as it drifts away from the area of operation. Some time around +48hrs to +72hrs, the storm should start to track back towards the SW and near the area of operation. For this reason the invest will need to be tracked going forward as there is still some divergence in its long term structure and intensity.

**Convection:** The 12Z Sep 13 GFS shows that there is a decent chance of scattered convection over the next 24 hours, which becomes even more likely within 48 hours. This is due to the slow motion of 95W and that 95W is forcing strong convergence to its south.

**MJO/BSISO:** There is no change to the MJO discussion from yesterday. The current BSISO index is in phase 5, and the previous discussion of a retrograde has verified. Both GFS and ECMWF are still in agreement that it will propagate back to a phase 6 and onward in the 0-4 day timeframe. There is also agreement that the amplitude will stay consistent until at least phase 7.

**SSTs:** SSTs are still expected to remain warm around 29°C.

**Currents and Wave Heights:** 95W is still moving northward, and wave heights should decrease from 7-9 feet to 3-5 feet over the next 48 hours according to the 12Z Sep 13 WW3. Currents should continue to be variable at 1-3kts through the next 36hrs.

**CAMP2EX:** The ship and CAMP2EX teams have been in contact about planned coordination.

FORECASTER: CASAS, DESROSIERS, PASILLAS



# JOINT TYPHOON WARNING CENTER

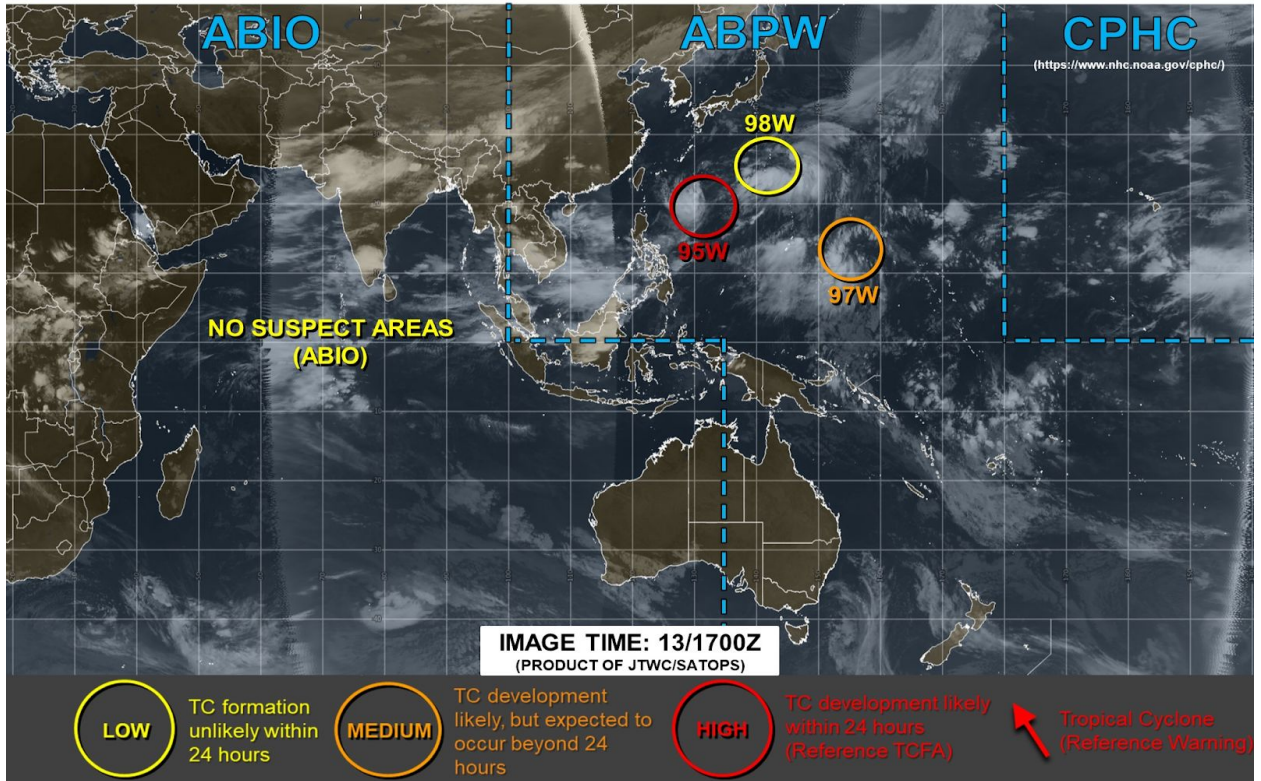


Fig. 1. JTWC TC outlook valid at 17Z Sep 13.

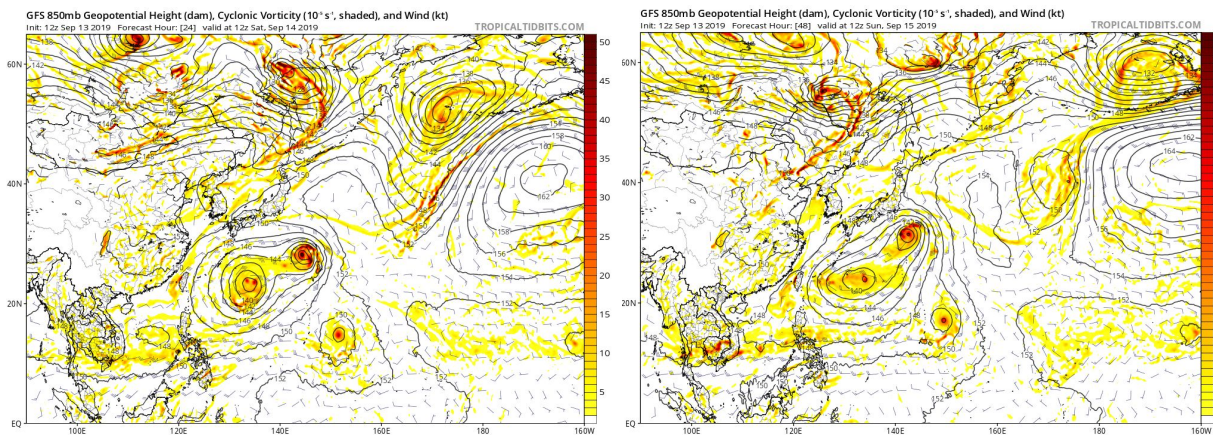


Fig. 2. GFS 850 mb vorticity and wind field and mean sea-level pressure initialized at 12Z on Sept. 13th, valid for 12Z Sept. 14th (left) and 12Z Sept. 15th (right).

