

2000 UTC 07 September 2019 Forecast Discussion
Current Ship Location: Near 17N, 126.6E

Summary: 95W, currently centered around 12.7N and 148E, could undergo genesis near or past +48hrs as it tracks generally westward. The system could begin to impact the area of operation at +96hrs and should be closely monitored by the ship. BSISO is currently in phase 6 with potential for a weaker amplitude phase 5 next week.

Day One (24 hr) Outlook: No tropical cyclogenesis is expected in the next 24 hours. Increased chances of precipitation associated with rain showers and thunderstorms. Significant wave heights in the 4-6 ft range are expected.

Day Two (48 hr) Outlook: No tropical cyclogenesis is expected in the next 48 hours, though the wave associated with 95W continues to slowly move westward. Increased chances of precipitation associated with rain showers and thunderstorms. Significant wave heights expected to slightly increase towards the end of day two, in the 4-7 ft range are expected.

Extended Outlook: 95W will need to be tracked going forward as both the GFS and ECMWF indicate a genesis event at or near +48hrs with subsequent impacts likely in the area of operations. The ship will need to monitor this and be prepared to move out of the potential track of 95W in the coming days if this becomes necessary.

Discussion

TCs: 96W, centered near 27.2N and 124.6E, was labeled by the JTWC as a new invest with a low likelihood of formation in the next 24 hours. As it is located north of the area of operations and expected to move northward, it does not merit further discussion.

95W, currently centered around 12.7N and 148E, continues to be labeled with low likelihood of formation in the next 24 hours by JTWC. The GFS and ECMWF deterministic solutions continue to show genesis around or past +48hrs. Models show a stronger agreement on this than yesterday. The outer edges of the system may begin to impact the area of operation by +96hrs. This system will continue to be closely monitored as it likely poses a threat to operations.

Convection: The ship is currently located between precipitation area from the remnant of TY Lingling's rainbands to the northwest and a larger area of precipitation associated with the remnant of 93W to the southeast (Fig. 1). GFS and COAMPS are indicating no change in the forecast from yesterday, with increased chances of precipitation associated with rain showers and thunderstorms over the next 48 hours (Fig. 2). In the longer forecast period, GFS is indicating a decrease in precipitation between around 00Z Sept. 10th and 06Z Sept. 11th, as the area of precipitation currently over the area of operation shifts west and suppressed conditions develop ahead of the incoming Invest 93W.

MJO/BSISO: The current BSISO index is in phase 6. Both GFS and ECMWF are in agreement of a retrograde to phase 5 next week, before propagating back to a phase 6 and onward. However, GFS is indicating a stronger amplitude than the ECMWF. The ECMWF MJO index has a weak amplitude around the border of phase 5 and 6, with diminishing amplitude expected over the next few weeks.

SSTs: SSTs are still expected to remain warm around 29°C.

Currents and Wave Heights: No significant change from yesterday: models are suggesting SWH will be in the 4-7 ft range for the next 48 hrs.

CAMP-EX: Coordination proposed for Sept. 9th to observe shallow convection and composition associated with the Manila plume and satellite cal/val of NOAA20 instruments.

FORECASTER: DEHART, DESROSIERS, RAZIN

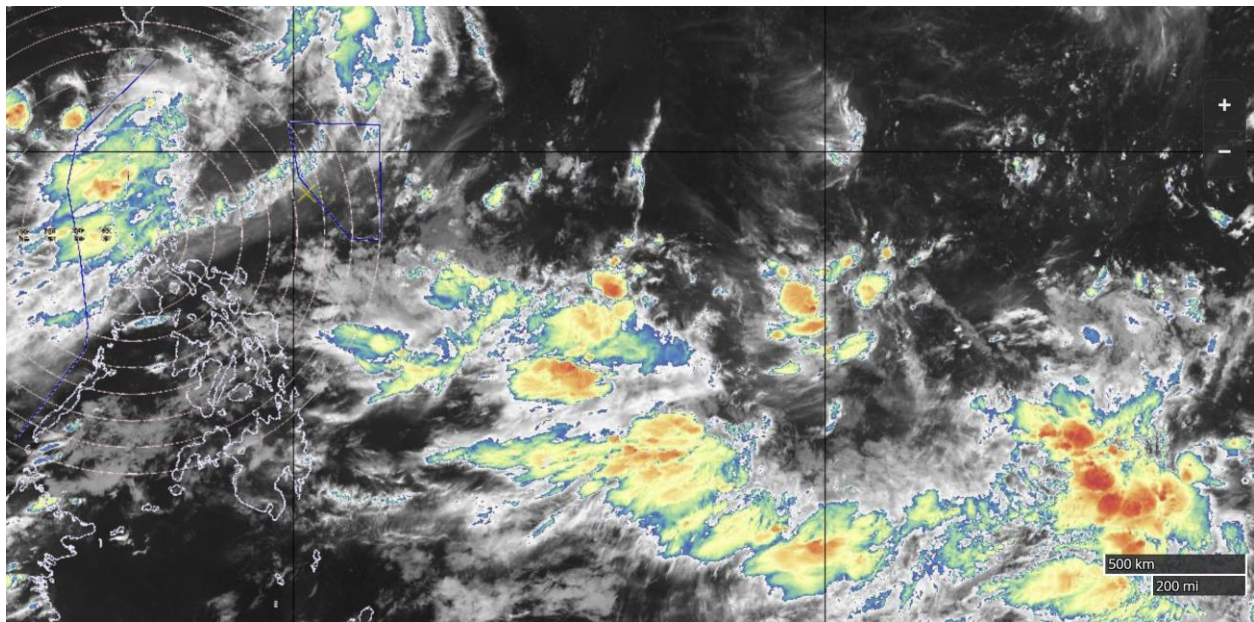


Fig. 1. IR imagery at 1858 UTC on Sep. 7th 2019.

GFS Total Accumulated Precipitation (mm) from 12z07Sep2019 to 12z09Sep2019

Init: 12z Sep 07 2019 Forecast Hour: [48] valid at 12z Mon, Sep 09 2019

TROPICALTIDBITS.COM

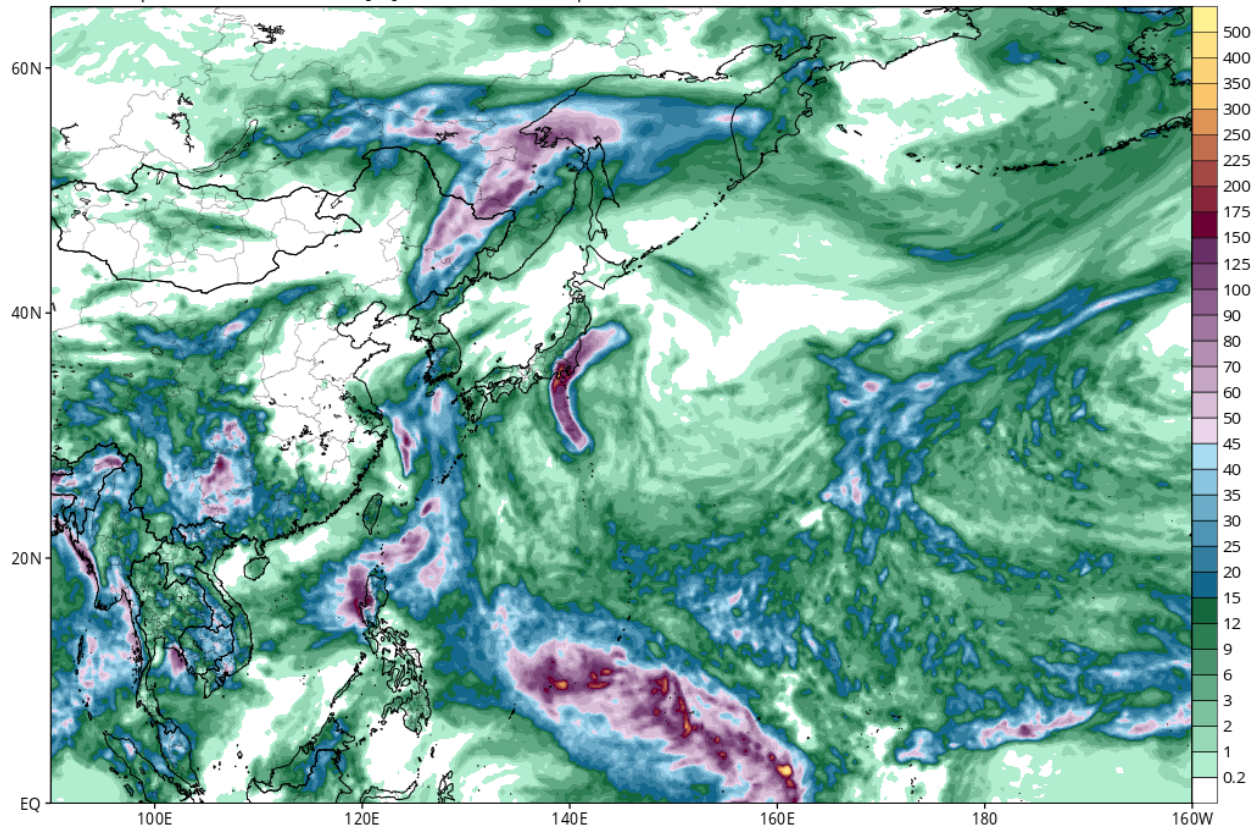


Fig. 2. [1] Accumulated rainfall from 12Z Sep. 7th through 12Z Sep. 9th.