

2000 UTC 30 August 2019 Forecast Discussion
Current Ship Location: Keelung City, Taiwan (Pre-Departure)

Summary

BSISO is currently Phase 4 and may be Phase 6 in approximately two weeks.
Pre-Departure: High in the low 90s °F with 10-20% chance for precip through departure date in Taiwan. Invest 91W is continuing westward and should not impact operations.

Departure & Onward: Invest 92W is forecast to undergo genesis SE of the area of operation around 12Z Sep 01. Its current trajectory crosses over the area of operation around 00Z Sep 03, and continues to approach towards Taiwan.

Day One (24 hr) Outlook: No tropical cyclogenesis expected in the next 24 hours. Temperatures should reach into the low 90s °F in Keelung City, Taiwan with a 10-20% chance for precipitation.

Day Two (48 hr) Outlook: Invest 92W could potentially undergo genesis within the 48 hour wind east of the Philippines (around 12.5N, 130E). This invest has the potential to impact ship routing but will not likely affect departure time. Temperatures should again reach the low 90s°F with a 10-20% chance for precipitation near Keelung City, Taiwan.

Extended Outlook: With estimated departure date being on the morning of September 2nd local time, conditions should be pleasant near Keelung City. Potential genesis of Invest 92W will be a concern for ship routing and will be the focus for future discussions. When and where this potential genesis occurs is highly uncertain although models have been consistent in genesis at some point with a favorable environment forecasted.

Discussion

TCs: Invest 91W is currently just west of the Area of Operation, but is expected to continue moving westward and not impact operations. Invest 92W is the primary concern for operations, and the 12Z Aug 30 ECMWF shows Invest 92W undergoing TC genesis at approximately 12Z Sep 01 near (12.5N, 130E). Invest 92W is then forecast to closest approach the area of operation around 00Z Sep 03, and then proceed towards Taiwan. ECMWF then shows a potential landfall in Taiwan at approximately 12Z Sep 08. Caution may be necessary when developing the ship route to the area of operation, and Invest 92W will be closely monitored.

Convection: A stationary frontal system is currently northeast of Taiwan, providing an unstable environment for convection to develop. Isolated precipitation is expected to occur for the next 24-h around northern Taiwan. The frontal system is expected to continue moving northward.

MJO/BSISO: Models are suggesting that BSISO is in phase 4 right now but disagree with future propagation. CWB expects a retrograde towards phase 3 while ECM has a continual

propagation towards phase 5 and 6. The GFS is forecasting a decay of the BSISO amplitude. Regardless, BSISO is not expected to bring enhanced convection in the northwest Pacific over the next couple weeks based on the latest models.

SSTs: SSTs are warm between 29-31°C.

Currents and Wave Heights: Wave heights are expected to be 3-5 ft at the day of departure near the Keelung harbor (Sep 02), and wave heights around the area of operation are forecast to be 4-5 ft. Wave heights potentially increase to 21 ft around the area of operation on 00Z Sep 03.

CAMP-EX: no coordination planned in the next 48 hours.

FORECASTERS: CASAS, CHA, TRABING

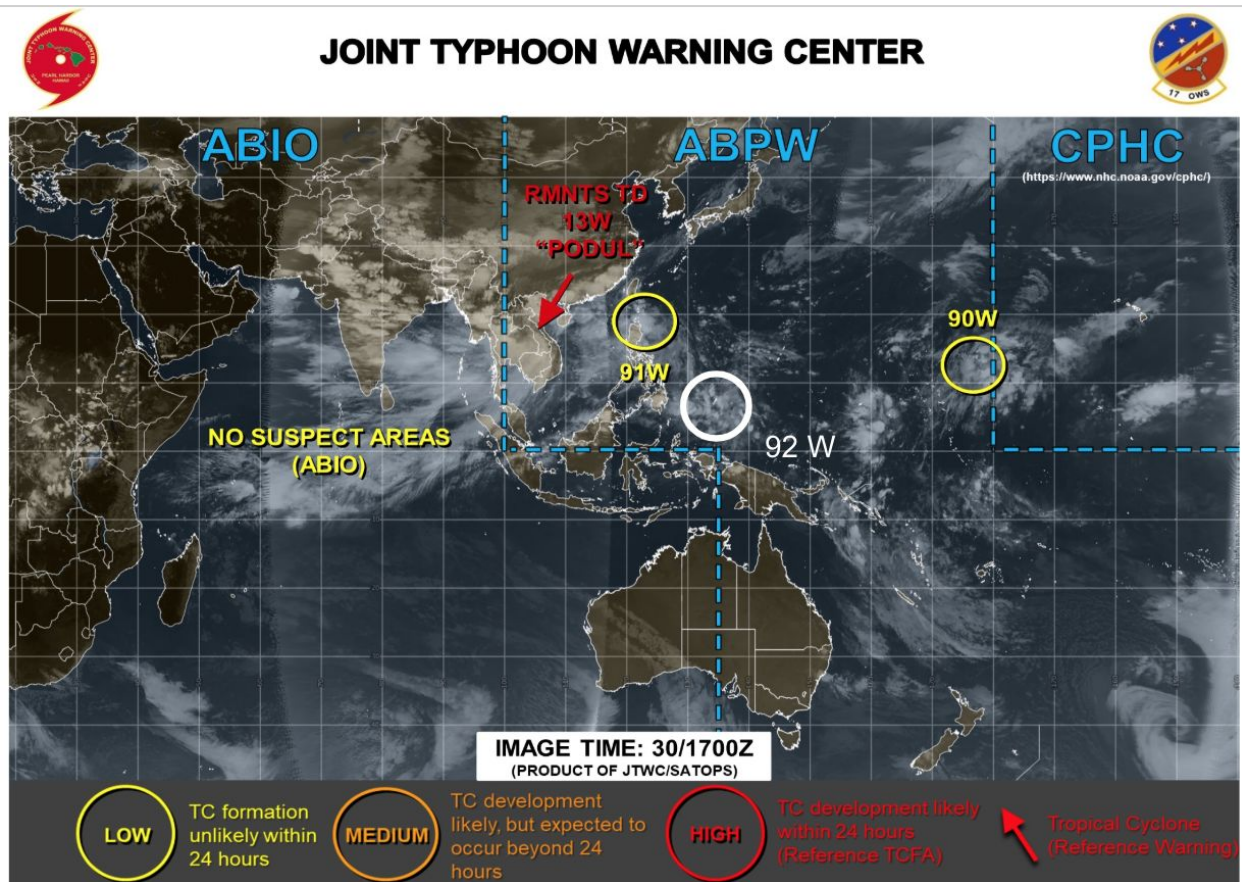


Fig. 1. [1] JTWC Tropical warnings issued at 12Z Aug. 30.

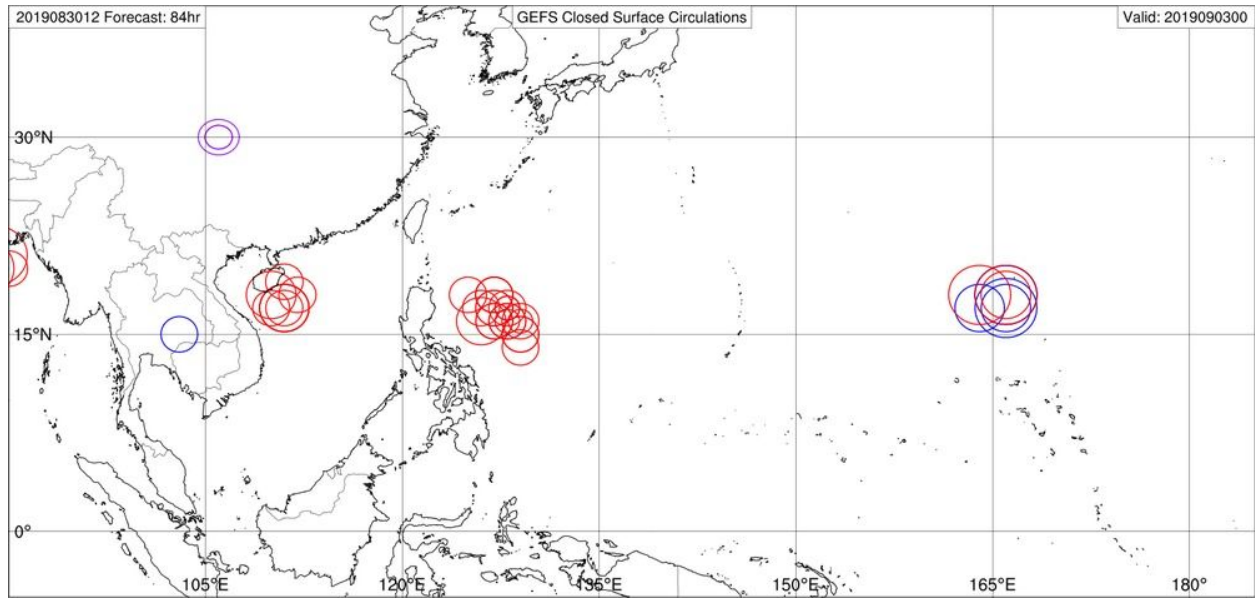


Fig. 2. [2] Alan Brammer's GEFS Closed Surface Circulation initialized at 12Z Aug 30, valid at 00Z Sep 03 (Scheduled Departure +48h).