

## 2000 UTC 09 October 2018 Forecast Discussion

### **Summary:**

The ship is currently in a subsidence area with dry region at mid-high levels from WV satellite images. Subtropical high to the NE of the ship will influence the weather in the area of operation for the next couple days. The environment is still under convection suppression. Some scattered shallow convection might be expected. Wave heights are expected to decline from 4-5 to 3-4 ft in the next 24 hrs, then going back to 4-5 ft in the next 3-4 days. The wave direction is also changing from NE to E. The surface wind is expected to remain below 10 kts in 48 hrs and the wind direction might change from NE to E in the next 24 hrs.

The BSISO I is active in phase 2 over the Indian Ocean. The MJO signal remains suppressed in the area of operation.

### **Day One (24 hr) Outlook:**

The weather is relatively clear. Winds are calm at 5-10 knots, and the wind direction might change from NE to E. Wave products forecast significant wave heights are declining from 4-5 to 3-4 ft NE-E in the next 24-hr.

### **Day Two (48 hr) Outlook:**

Winds over the area of operation might increase to 10-15 knots and the wind direction will remain mostly E. Significant wave height might increase to 4-5 ft, while the direction remains E.

### **Extended Outlook:**

The wind might increase to 10-20 kts Easterly. Significant wave heights might will be between 3-5 ft Easterly in the next 48-hr.

### **Discussion**

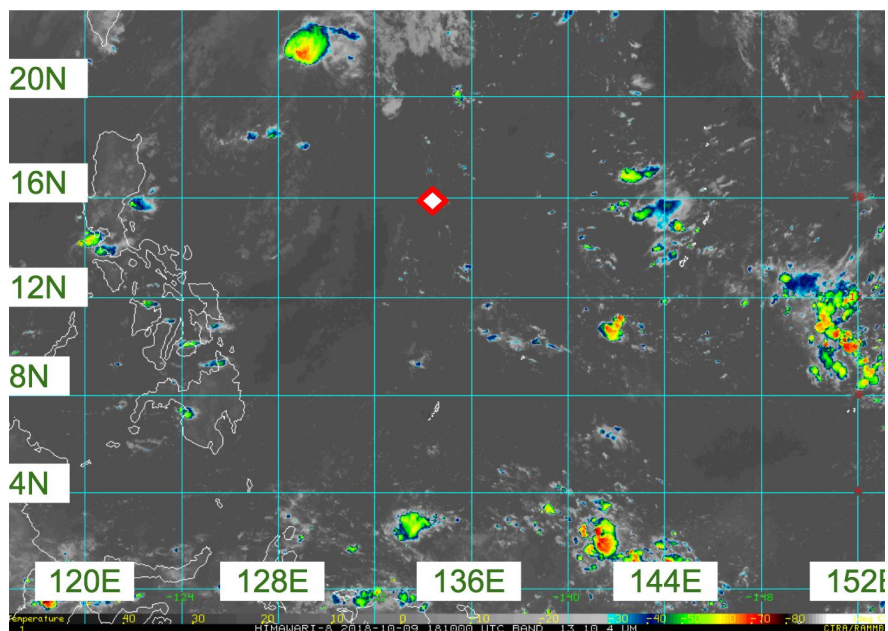
**Convection:** Scattered precipitation is possible within the next 24 hrs. There is convection systems to the 800 km East of the ship location. The system may or may not change significantly in the next 48 hrs. We will keep track of it.

**MJO/BSISO:** No updates from yesterday. From both BOM and ECM forecast, the BSISO I remains active in phase 2 (in the Indian Ocean). The updated MJO signal is active in phase 1 (West hemisphere and Africa), and it is also suppressed in the area of operation.

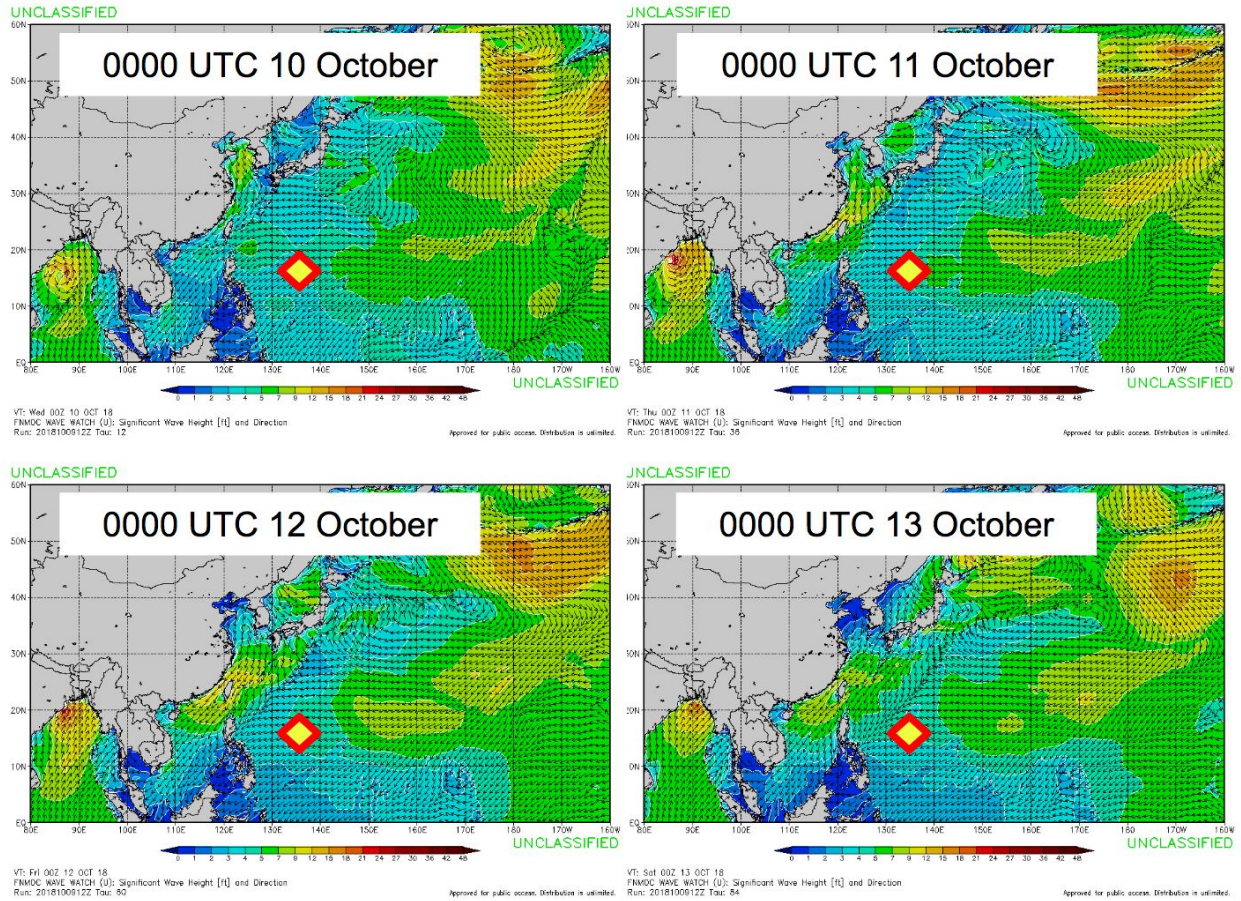
**SSTs:** Sea surface temperatures within the region are expected to remain within the range of 28-29 C throughout the 24-hr forecast period.

**Currents and Wave Heights:** Wave height conditions show little change and remain calm over the next 3 days.

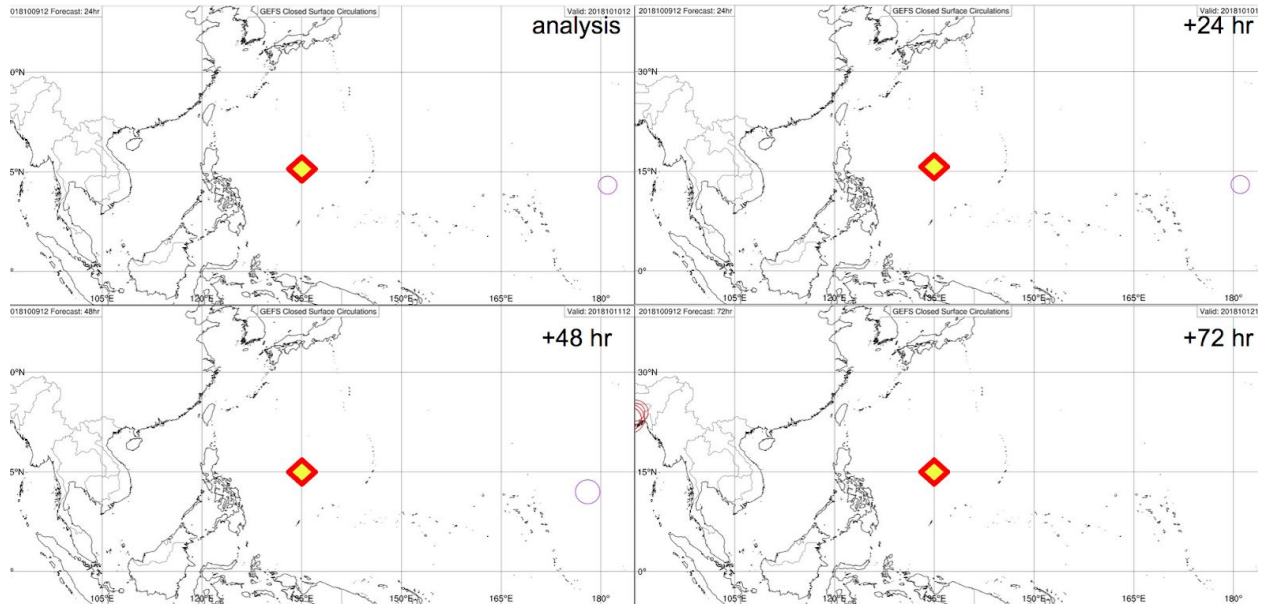
FORECASTERS: FENG, JONES AND PANASAWATWONG



**Fig. 1.** Himawari IR imagery (10.4 microns) valid at 1810 UTC 09 October 2018. Ship location is marked with a diamond. [1]



**Fig. 2.** FNMOC WW3 significant wave height forecast initiated at 1200 UTC 09 October and valid at (top left) 00 UTC 10 October (top right), 00 UTC 11 October (bottom left), 00 UTC 12 October, and (bottom right) 00 UTC 13 October. [2]



**Fig. 3.** GEFS ensemble 10-m circulation forecast initiated at 1200 UTC 09 October 2018 and valid from the analysis time through to 1200 UTC 12 October. Circulation centers are colored with respect to maximum wind speed. Purple:  $\leq 20$  knots, Blue: 20-34 knots, Red:  $> 34$  knots. [3]