

2000 UTC 08 October 2018 Forecast Discussion

Summary:

The ship is currently in a subsidence area with dry region at mid-high levels from WV satellite images. Subtropical high to the NE of the ship will influence the weather in the area of operation for the next couple days, so the weather will be relatively clear. Wave heights are expected to decline to from 4-5 to 3-4 ft in the next 24 hrs, then going back to 4-5 ft in the next 3-4 days. The wave direction is also changing from NE to E. The surface wind is expected to remain below 10 kts in 48 hrs and the wind direction might change from E to NE in the next 24 hrs.

The BSISO I is active in phase 2 over the Indian Ocean. The MJO signal remains suppressed in the area of operation.

Day One (24 hr) Outlook:

The weather is relatively clear. Winds are calm at 5-10 knots, and the wind direction might change from E to NE. Wave products forecast significant wave heights are declining from 4-5 to 3-4 ft NE in the next 24-hr.

Day Two (48 hr) Outlook:

Winds over the area of operation might increase to 5-15 knots and the wind direction will remain mostly E as the subtropical ridge intensifying. Significant wave height will remain at 3-4 ft, while the direction shift from NE to E.

Extended Outlook:

The wind remains at 5-15 kts Easterly. Significant wave heights might increase back to 4-5 ft Easterly by the end of the next 48-hr.

Discussion

Convection: Scattered precipitation is possible within the next 24 hrs. Forecast products suggest drying within the region over the next 2 days. No significant weather activity is expected.

MJO/BSISO: No updates from yesterday. From both BOM and ECM forecast, the BSISO I is active in phase 2 (in the Indian Ocean). The updated MJO signal is active in phase 1 (West hemisphere and Africa), and it is also suppressed in the area of operation.

SSTs: Sea surface temperatures within the region are expected to remain within the range of 28-30C throughout the 24-hr forecast period.

Currents and Wave Heights: Wave height conditions continue to decline and remain calm over the next 3 days with calmer conditions expected.

FORECASTERS: FENG, JONES AND PANASAWATWONG

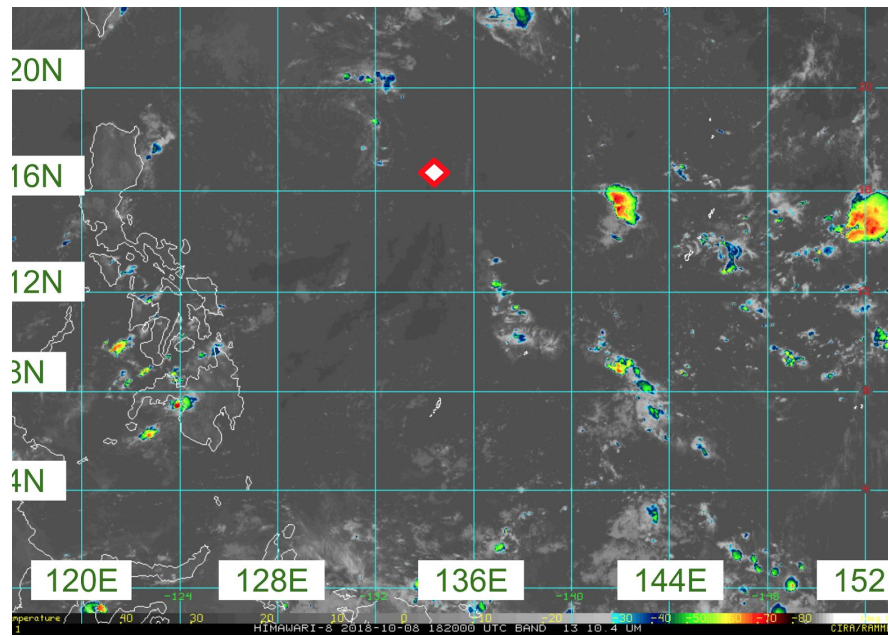


Fig. 1. Himawari IR imagery (10.4 microns) valid at 1820 UTC 08 October 2018. Ship location is marked with a diamond. [1]

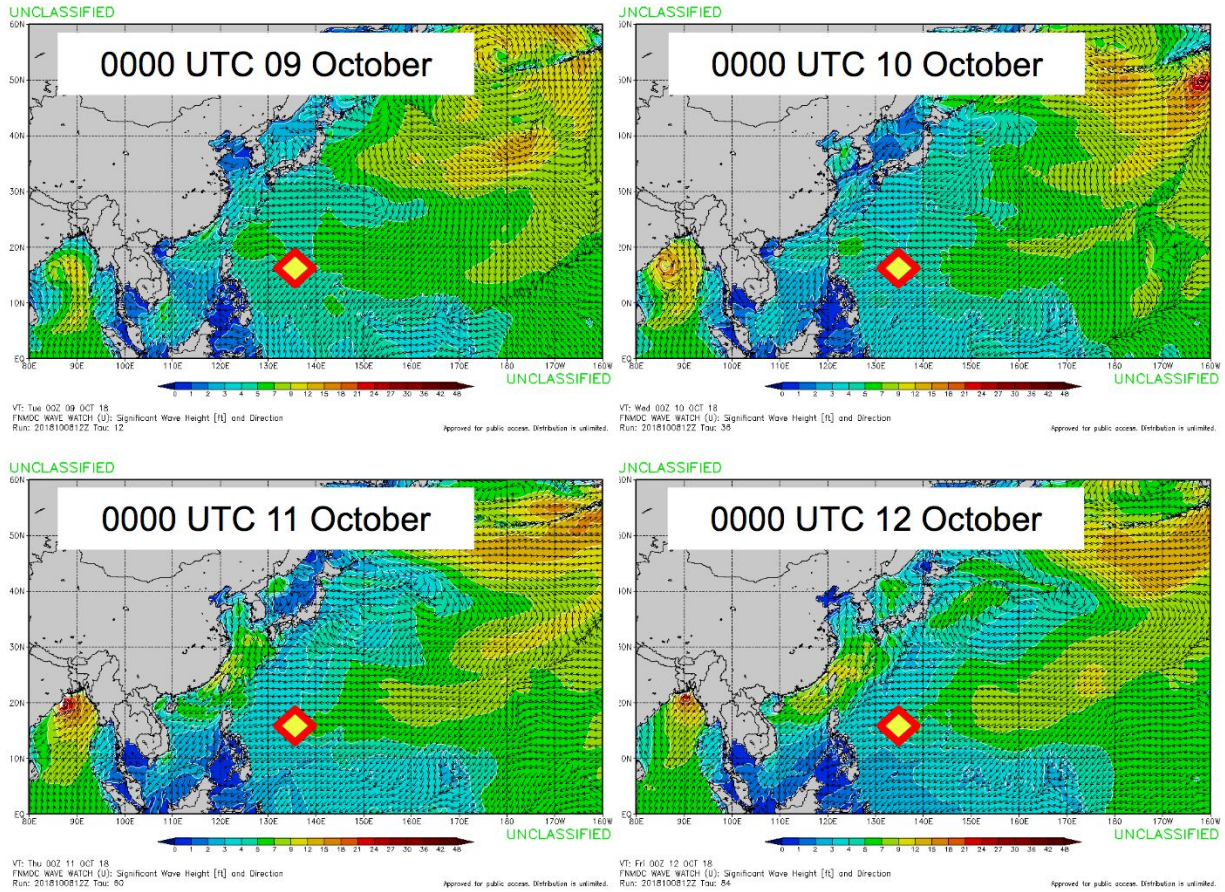


Fig. 2. FNMOC WW3 significant wave height forecast initiated at 1200 UTC 08 October and valid at (top left) 00 UTC 09 October (top right), 00 UTC 10 October (bottom left), 00 UTC 11 October, and (bottom right) 00 UTC 12 October. [2]

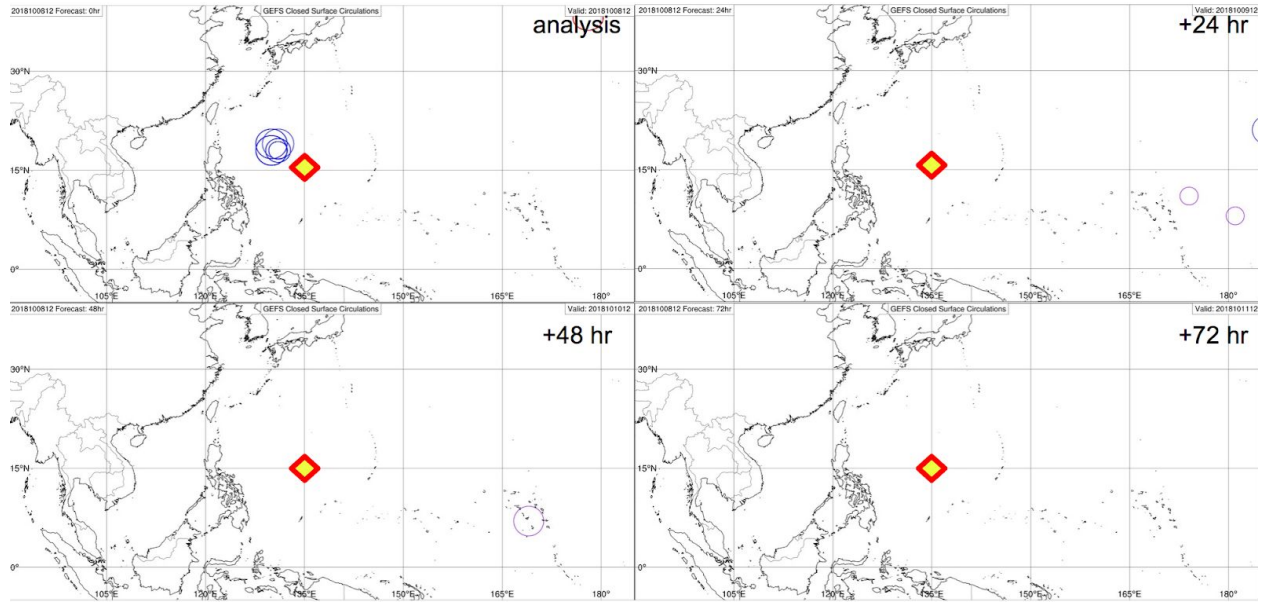


Fig. 3. GEFS ensemble 10-m circulation forecast initiated at 1200 UTC 08 October 2018 and valid from the analysis time through to 1200 UTC 11 October. Circulation centers are colored with respect to maximum wind speed. Purple: ≤ 20 knots, Blue: 20-34 knots, Red: > 34 knots. [3]