

2000 UTC 07 October 2018 Forecast Discussion

Summary:

The convection associated with the cold low north of ship is decaying and continues to move to NW. The ship is currently in a subsidence area with dry region at mid-high levels from WV satellite images. Significant wave heights continue to decline over the next 2-4 days. Wave heights are expected to decline to from 5-7 to 3-4 ft by the end of that time frame. The wave direction is also changing from NE to E. The surface wind is expected to below 10 kts in 48 hrs and the wind direction will change from S to E.

Updates on BSISO and MJO: The BSISO I is active in phase 2 over the Indian Ocean. The MJO signal remains suppressed in the area of operation.

Day One (24 hr) Outlook:

There is light scattered convection around the ship location. Winds are calm at 5-10 knots, and the wind direction continues to change as the convection north of the ship moves away. Wave products forecast significant wave heights are in 5-7 ft from NE for the next 24-hr.

Day Two (48 hr) Outlook:

Winds over the area of operation will remain calm at to 5-10 knots and the wind direction will continue to shift toward E as the convection systems move away. Significant wave heights are decreasing to 4-5 ft from NE for the next 48-hr.

Extended Outlook:

The wind is calm at 5-10 kts and direction keeps changing between NE and SE as the easterly wave approaches. The significant wave height will be decreasing from to 3-4 ft and the direction will be shifting toward Easterly.

Discussion

Convection: Scattered precipitation is possible within the next 24 hrs. Forecast products suggest drying within the region over the next 2 days. No significant weather activity is expected.

MJO/BSISO: Updated on BSISO and MJO: The BSISO I is in phase 2, active in the Indian Ocean. The MJO signal is also suppressed in the area of operation.

SSTs: Sea surface temperatures are expected to remain in the range of 28-30C throughout the 24-hr forecast period.

Currents and Wave Heights: Wave heights continue to decline from 5-7 ft to less than 5 ft over the next 3 days with calmer conditions expected.

FORECASTERS: FENG, JONES AND PANASAWATWONG

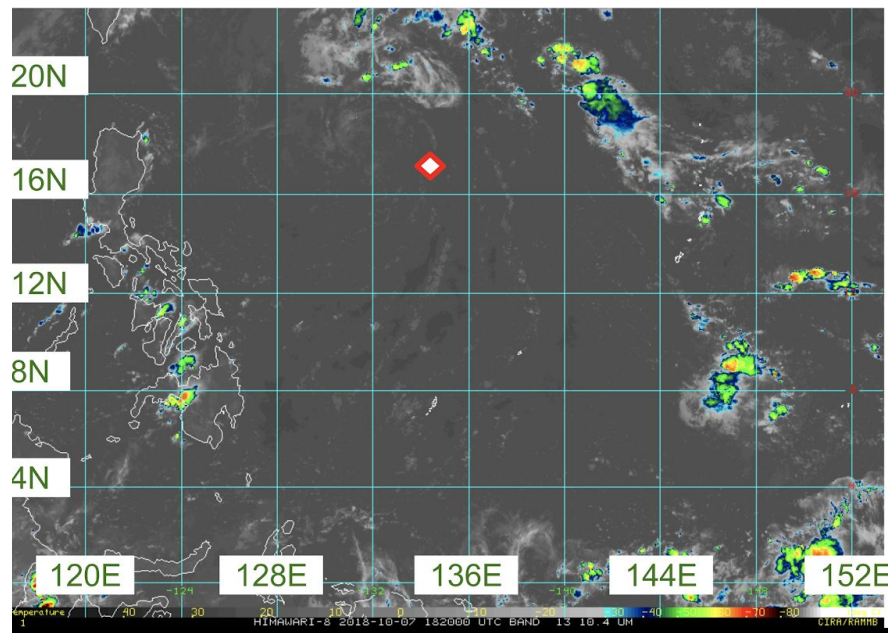


Fig. 1. Himawari IR imagery (10.4 microns) valid at 1820 UTC 07 October 2018. Ship location is marked with a diamond. [1]

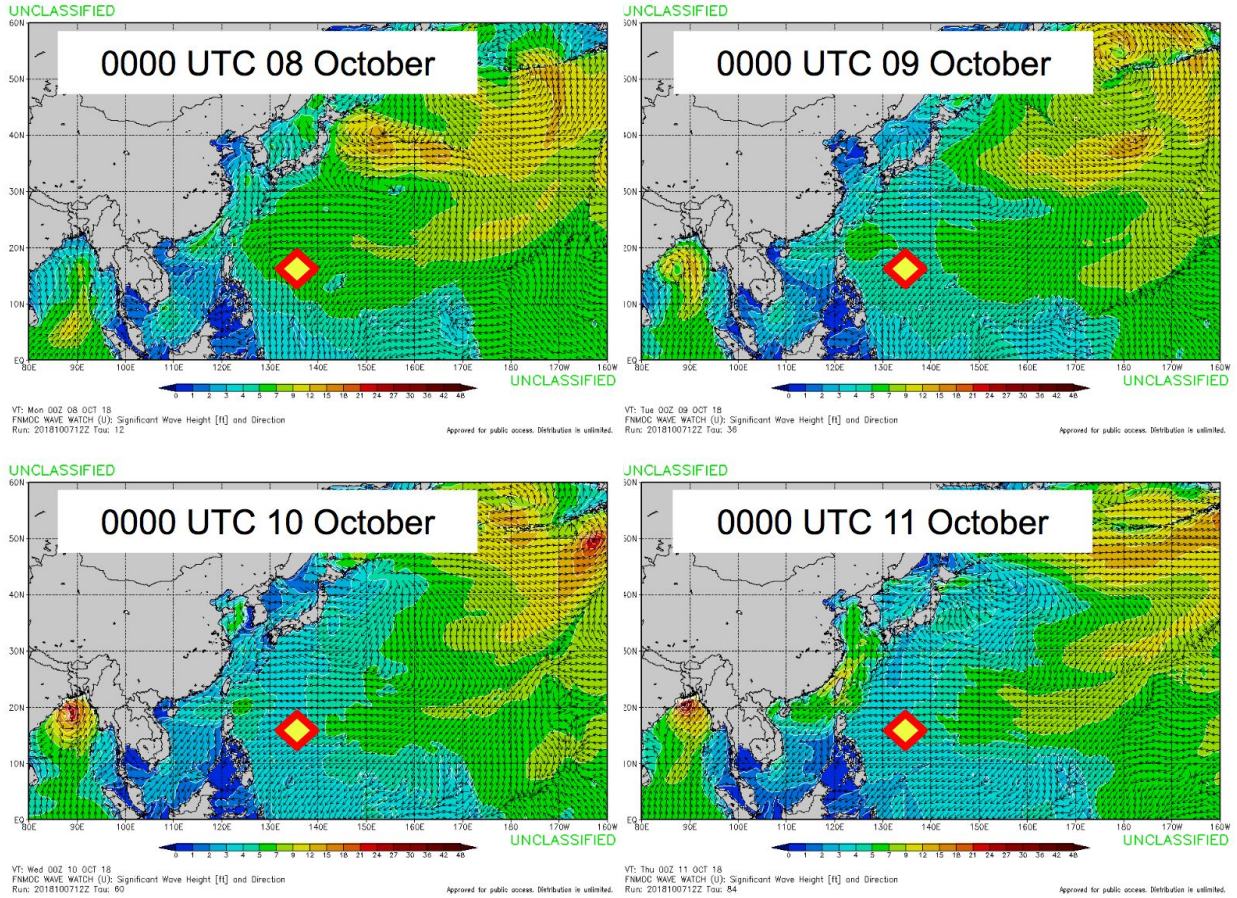


Fig. 2. FNMOC WW3 significant wave height forecast initiated at 1200 UTC 07 October and valid at (top left) 00 UTC 08 October (top right), 00 UTC 09 October (bottom left), 00 UTC 10 October, and (bottom right) 00 UTC 11 October. [2]

