

2000 UTC 05 October 2018 Forecast Discussion

Summary:

The ship is in the weak convection zone, so expecting light scattered convection in the next 24 hr. The nearby MCSs, locating to the Northeast of the ship, are slowly moving to the west. When ship arrives at the mooring location at 16N, we might run into the MCSs. Convection and precipitation is expected from 24-48 hrs at the mooring location. We will be keeping track of the systems. The wind can go up to 5-20 kts in the next 24 hrs and change direction from N to NE, due to the nearby MCSs. Significant wave height remains at 5-7 ft in the next 48 hr, but will be decreasing to 4-5 ft after that.

No update to BSISO/MJO forecasts.

Day One (24 hr) Outlook:

There is light scattered convection around the ship location. Winds over the area of operation are expected to increase to 5-20 knots and the wind direction is changing from N to NE for the next 24-h. Wave products forecast significant wave heights are in 5-7 ft with direction changing from NW to N for the next 24-hr.

Day Two (48 hr) Outlook: There will be convection from the MCSs around the mooring location. Winds over the area of operation are expected to decrease to 5-10 knots and the wind direction changes as the easterly wave approaches. Wave products forecast significant wave heights are in 5-7 ft from NW for the next 48-hr.

Extended Outlook:

The convection will weaken if the MCS system dissipates over the next 48-hrs. The wind is calm at 5-10 kts and direction changes as the easterly wave approaches. The significant wave height will be decreasing from 5-7 ft to 4-5 ft and the direction will maintain NE.

Discussion

Convection:

Scattered precipitation is possible in the next 24 hrs. MCSs observed to the northeast of ship location moving to the west, and will influence the area of operation as the ship moving toward the mooring location. Convective activity may be observed around ship location in the next 24-48 hrs.

MJO/BSISO: No update to BSISO/MJO forecasts, and yesterday's forecast of a possible northeastward propagation of BSISO and no significant amplified MJO signal remains valid.

SSTs: Sea surface temperatures are expected to remain in the range of 28-30C throughout the 24-hr forecast period.

Currents and Wave Heights: Wave heights continue to decline over the next 3 days, consistent with previous forecasts.

FORECASTERS: FENG, JONES AND PANASAWATWONG

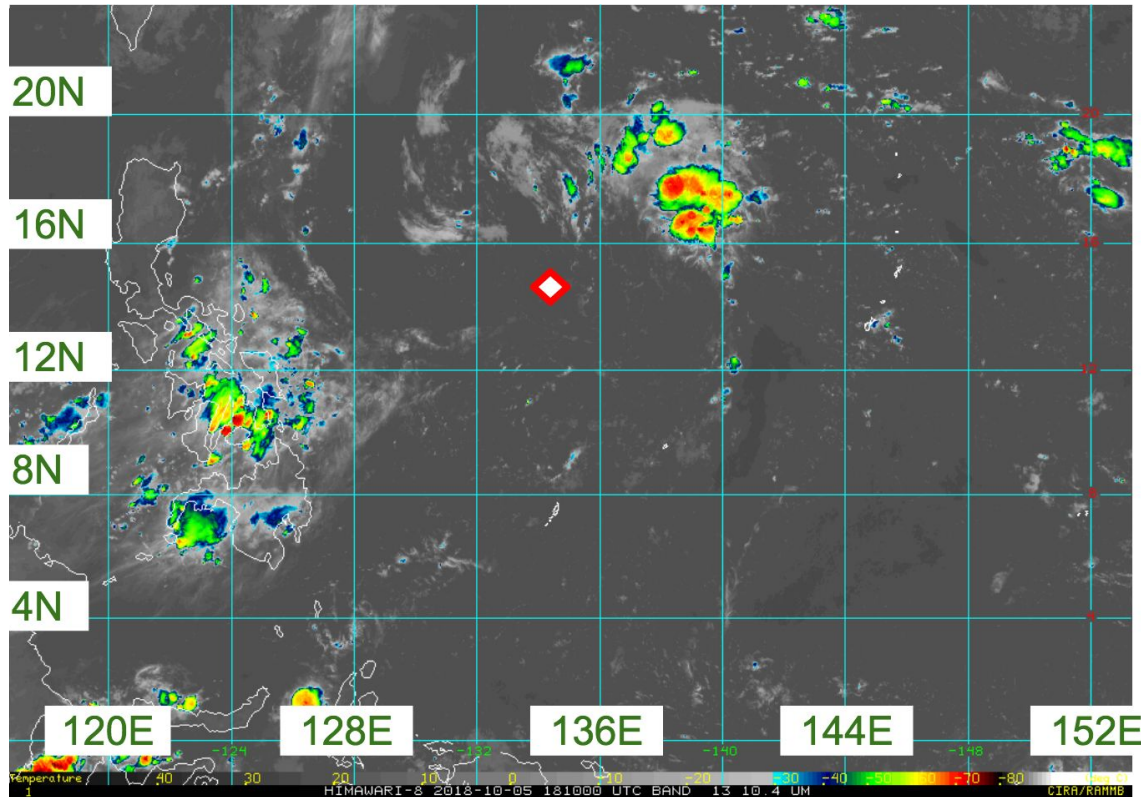


Fig. 1. Himawari IR imagery (10.4 microns) valid at 1800 UTC 05 October 2018. Ship location is marked with a diamond. [1]

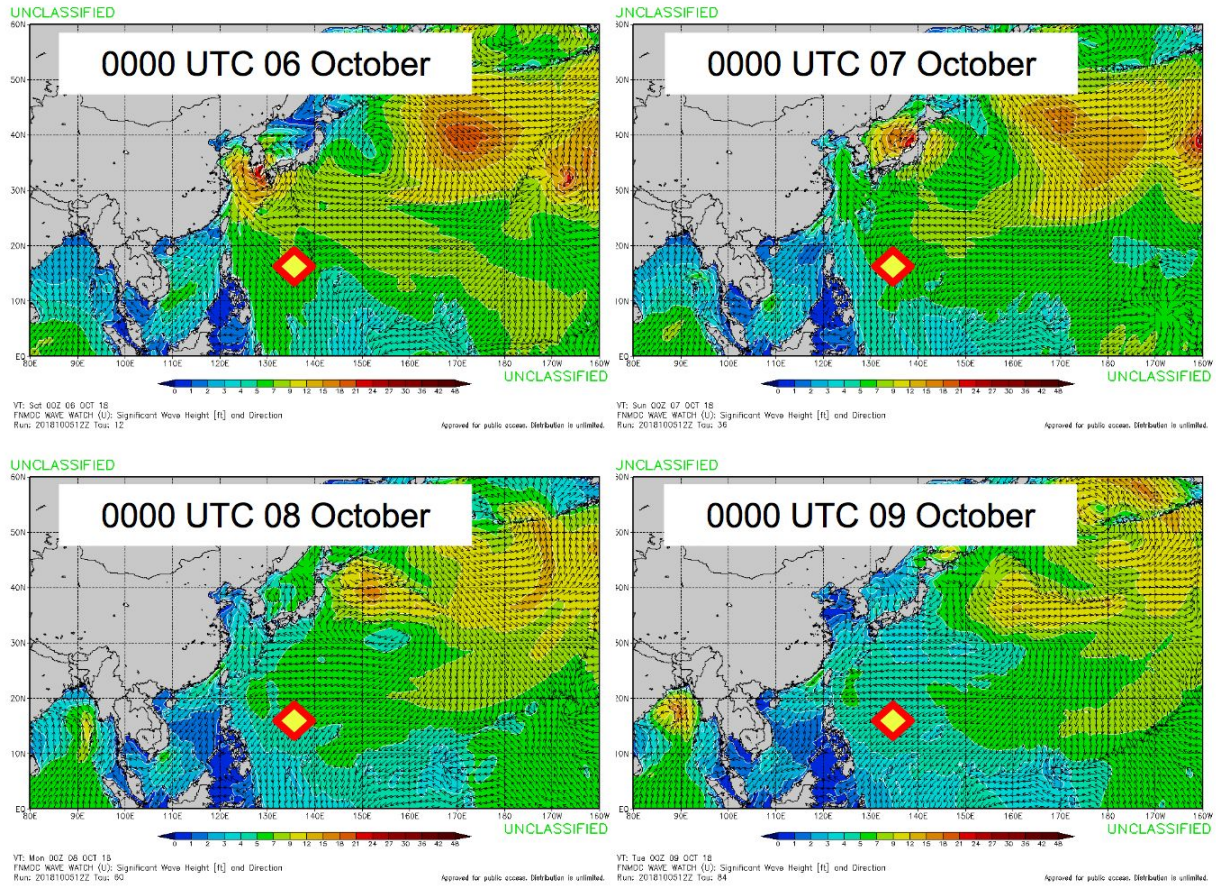


Fig. 2. FNMOC WW3 significant wave height forecast initiated at 1200 UTC 05 October and valid at (top left) 00 UTC 06 October (top right), 00 UTC 07 October (bottom left), 00 UTC 08 October, and (bottom right) 00 UTC 09 October. [2]

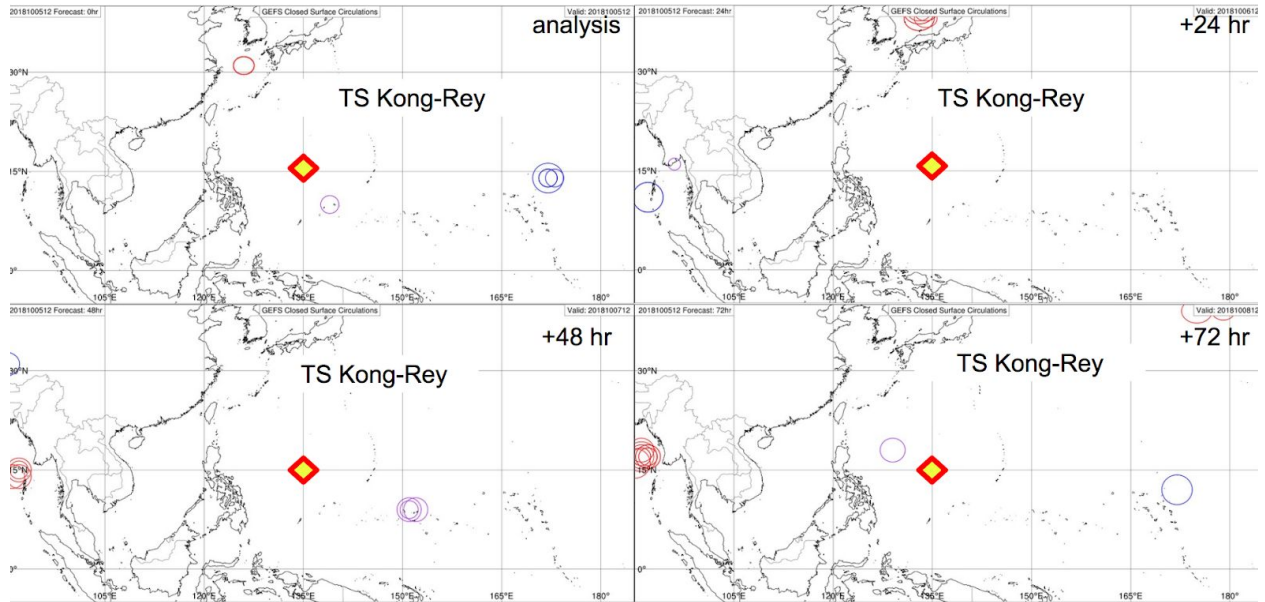


Fig. 3. GEFS ensemble 10-m circulation forecast initiated at 1200 UTC 05 October 2018 and valid from the analysis time through to 1200 UTC 08 October. Circulation centers are colored with respect to maximum wind speed. Purple: ≤ 20 knots, Blue: 20-34 knots, Red: > 34 knots. [3]